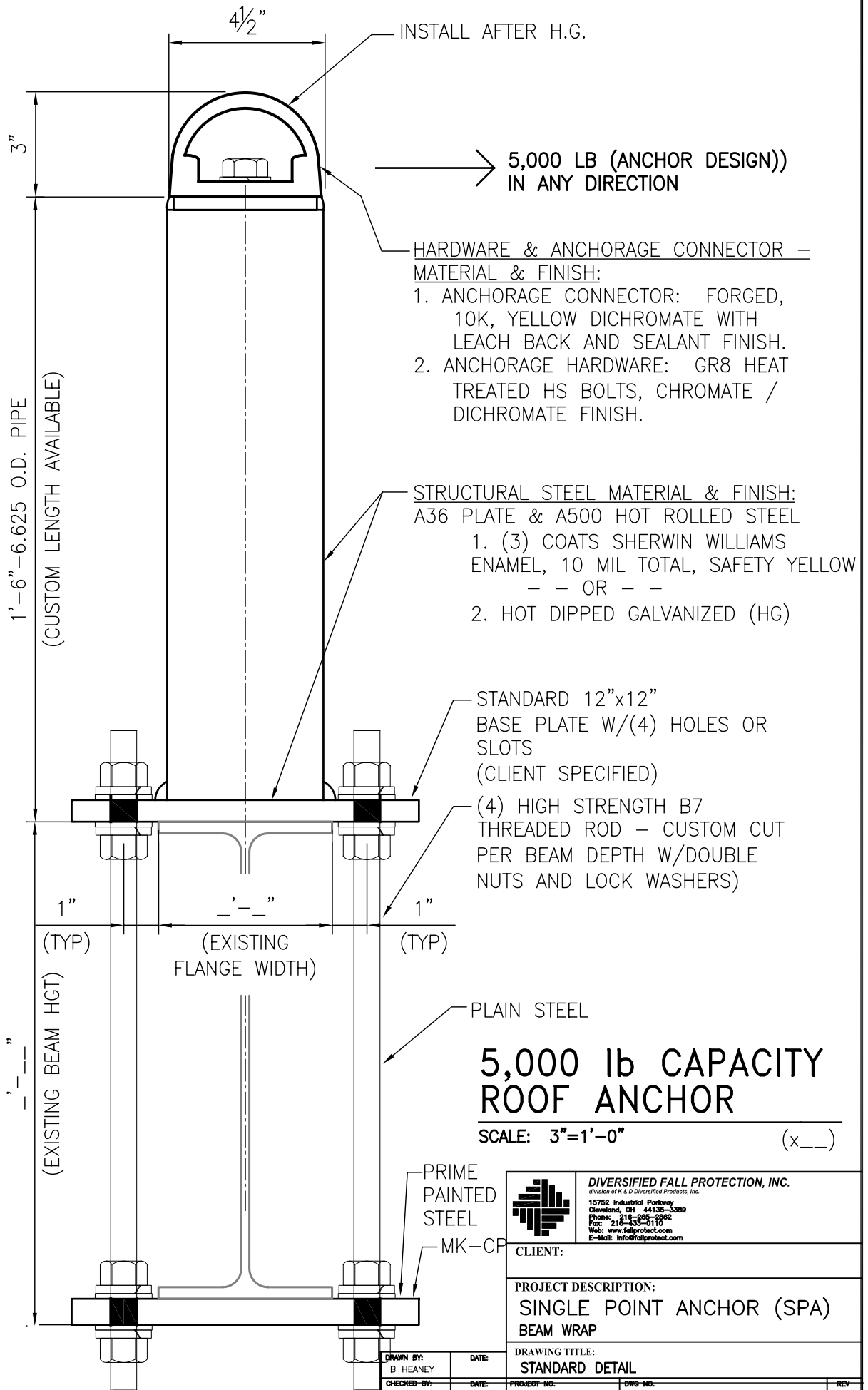


***NOTE:
STRUCTURAL
ANALYSIS OF
EXISTING
MEMBERS BY
OTHERS**

THIS DETAIL AND
CONCEPT ARE THE
PROPERTY OF
DIVERSIFIED FALL
PROTECTION, INC. AND
SHALL NOT BE
REPRODUCED, COPIED
OR USED IN ANY
MANNER WITHOUT
WRITTEN CONSENT OF
DIVERSIFIED FALL
PROTECTION, INC. OF
CLEVELAND, OHIO.

DFP 5000 lb single
point anchors are
equivalent to Boston
Anchor BA-1, Pro-Bel
PB series anchors and
Thaler FARA series
anchors.

They meet or exceed
OSHA qualifications per
1926.502 for 5000 lb
rigid roof anchors
suitable for single user
fall arrest or window
washing tie-off points"



INSTALL AFTER H.G.

5,000 LB (ANCHOR DESIGN)
IN ANY DIRECTION

HARDWARE & ANCHORAGE CONNECTOR –
MATERIAL & FINISH:

1. ANCHORAGE CONNECTOR: FORGED, 10K, YELLOW DICHROMATE WITH LEACH BACK AND SEALANT FINISH.
2. ANCHORAGE HARDWARE: GR8 HEAT TREATED HS BOLTS, CHROMATE / DICHROMATE FINISH.

STRUCTURAL STEEL MATERIAL & FINISH:
A36 PLATE & A500 HOT ROLLED STEEL

1. (3) COATS SHERWIN WILLIAMS ENAMEL, 10 MIL TOTAL, SAFETY YELLOW – – OR – –
2. HOT DIPPED GALVANIZED (HG)

STANDARD 12"x12"
BASE PLATE W/(4) HOLES OR
SLOTS
(CLIENT SPECIFIED)

(4) HIGH STRENGTH B7
THREADED ROD – CUSTOM CUT
PER BEAM DEPTH W/DOUBLE
NUTS AND LOCK WASHERS)

PLAIN STEEL

**5,000 lb CAPACITY
ROOF ANCHOR**

SCALE: 3"=1'-0" (x__)

PRIME
PAINTED
STEEL

MK-CP

	DIVERSIFIED FALL PROTECTION, INC. division of K & D Diversified Products, Inc.		
	15752 Industrial Parkway Cleveland, OH 44135-3389 Phone: 216-285-2862 Fax: 216-433-0110 Web: www.fallprotect.com E-Mail: info@fallprotect.com		

CLIENT:	
PROJECT DESCRIPTION: SINGLE POINT ANCHOR (SPA) BEAM WRAP	

DRAWING TITLE: STANDARD DETAIL	
-----------------------------------	--

DRAWN BY: B HEANEY	DATE:	PROJECT NO.:	DWG. NO.:	REV:
CHECKED BY:	DATE:		SPA-S1.	0
OTHER:	DATE:	SCALE: AS NOTED	SHEET 1 OF 1	