

ELEVATING SAFETY STANDARDS

Company Overview



DIVERSIFIED
FALL PROTECTION

OSHA-COMPLIANT FALL PROTECTION SYSTEMS TO REDUCE WORKPLACE FATALITIES

Your Fully-Integrated Fall Protection Partner



Diversified Fall Protection delivers value through our engineering systems and the industry expertise brought to client partnerships. Since 1994, our team has established a reputation for educating clients and delivering OSHA-compliant fall protection solutions.

Turnkey Fall Protection Solutions

We utilize a turnkey approach that creates single-source responsibility for all phases of your project, from engineering and fabrication to installation, training, and system certification. Then, we continue to support your safety and compliance over time with educational resources and fall safety inspections.

Any Fall Protection Application in Any Market

We offer the broadest range of fall protection solutions in the industry and can engineer a system for any application. Our patented and proprietary solutions provide our customers with the highest level of safety and value.

Your Trusted Safety Advisor

Our goal at Diversified Fall Protection is to build long-term partnerships with our customers. Our national team can deliver a consistent and repeatable fall protection experience to all of your locations. Diversified Fall Protection is proud to drive the industry forward when it comes to safety. We hold ourselves accountable for your safety and success.

WHAT IS FALL PROTECTION?

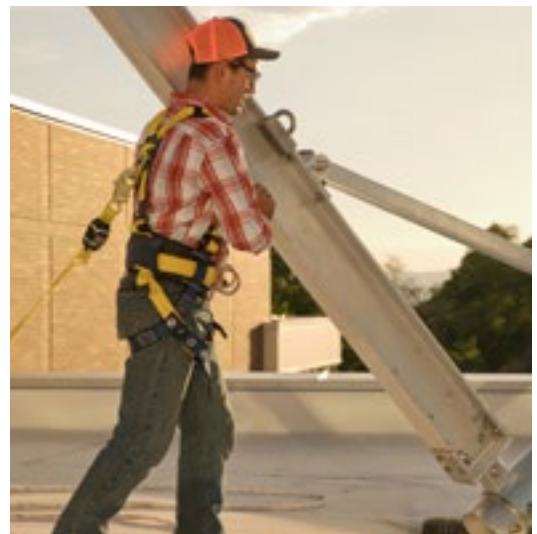
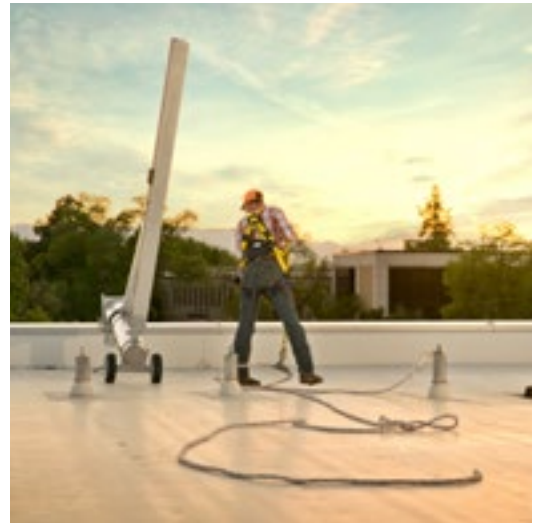
Most people associate fall protection with working on the roof of a skyscraper or dangling over the side of a building to wash windows; however, according to OSHA, any worker exposed to a fall of four feet or more requires fall protection. From unloading trucks to climbing ladders, workplace falls are a serious risk that exists both inside and outside of your facility.

Fall-Related Workplace Fatalities

Working at heights is dangerous, and unfortunately, over the last 30 years, it has become increasingly more dangerous. While the total number of workplace fatalities has decreased over this time, fall-related fatalities have increased. The average number of annual fall-related fatalities has increased 17% since the 1990s. Simply put, more needs to be done to keep workers safe while working at heights. Our goal at Diversified Fall Protection is to Elevate Safety Standards, so your workers will go home safe every day.

OSHA Citations

While keeping workers safe is the number one objective of a fall protection solution, limiting your company's exposure to OSHA citations and fines is essential. For the 9th consecutive year, fall protection tops OSHA's annual list of the top 10 most frequent violations. Fall-related citations account for 4 out of OSHA's top 10 most frequent citations. The average OSHA fall protection citation is \$12,600, and that cost can increase to over \$100,000 for repeat violators. Proper fall protection solutions reduce this exposure.



FALL PROTECTION SOLUTIONS



Lifeline Systems

WHO USES IT?

Cable-based lifeline systems provide continuous protection over a large area without the need to disconnect and reattach. When properly engineered and installed, lifeline systems can also support multiple users at a time.

WHAT DOES IT DO?

Horizontal and vertical lifelines are cables connected to two or more anchor points. Users tie off to the cable, providing a wide range of motion and movement.

EXAMPLES

Lifeline systems can be used in various applications and are an excellent solution for rooftop applications when workers need to cover large areas.



Rigid Rail Systems

WHO USES IT?

Rigid rail systems are ideal for interior and exterior overhead applications, such as rail and truck loading and unloading and overhead maintenance projects.

WHAT DOES IT DO?

Rigid rail systems arrest falls before the user strikes the ground or other objects below, limiting fall distance to less than two feet.

EXAMPLES

Exterior rigid rail systems and interior rail systems provide a great range of motion for overhead work on trucks and rail cars or overhead maintenance applications on airplanes or industrial machinery.



Anchor Points

WHO USES IT?

Anyone who needs access to a roof or workers requiring suspended access for application such as window washing or building façade maintenance.

WHAT DOES IT DO?

From davit arms to specialty vacuum anchors, engineered and installed anchor points provide a secure tie-off point that is effective and easy to use, making them an ideal fall safety solution for clearly designated work areas.

EXAMPLES

Anchor points are commonly used on rooftops to safely access and maintain rooftop utilities or for suspended access applications such as window washing. Anchors are also effective for in-plant machine maintenance, aircraft inspection, and more.



Guardrail & Safety Barriers

WHO USES IT?

Anyone working at height, including rooftop workers, construction workers, or maintenance crews, can be safely protected by guardrails.

WHAT DOES IT DO?

A guardrail meets all of OSHA's requirements for safety at height, with no training or special equipment required.

EXAMPLES

A guardrail can be fixed, modular, or portable. It can be installed along the perimeter of a roof, on a balcony, or used at a temporary worksite. Passive safety systems protect workers from falling through skylights and roof hatches or tripping over equipment while traversing the roof.



Ladders & Platforms

WHO USES IT?

All ladders and platforms have specified OSHA requirements designed to keep workers safe. Used both inside and outside of facilities, these access points are common in most workplaces.

WHAT DOES IT DO?

Countless accidents occur when workers lose their footing while carrying tools and materials up fixed ladders or access platforms. From providing the proper stand-off clearance from obstructions to platform guardrail height, OSHA-compliant ladder systems and access platforms keep workers safe while on the move.

EXAMPLES

Ladders and platforms are standard components of a fall protection solution. From maintaining overhead equipment to monitoring stations, these access systems are easy to use and effective.

FALL PROTECTION SERVICES





Hazard Assessments

Are you worried about OSHA compliance and workplace safety? Do you see risk management and loss prevention as strategic goals? The first step in implementing a fall protection solution is to evaluate your work environment and identify potential fall risks. DFP will inspect your workplace and assess worker routines to compile a full report of potential fall hazards and OSHA citations.

Inspections

OSHA requires that all fall protection systems be inspected annually to ensure good working order. At Diversified Fall Protection, our team will look for improperly tensioned lifelines, loose or rusted bolted connections, deployed tip over posts, faulty welds, or other areas that can compromise the safety of your workers.

Testing and Certifications

OSHA and ANSI certifications are required to be conducted periodically by qualified personnel. Our engineers are qualified to certify and recertify fall protection systems and complete the appropriate load testing and system inspections to meet current regulations.

Fall Protection Consultation

Do you have a special fall protection need? Do you need fall protection expertise to guide you through a situation your organization can't support internally? Not all fall protection needs are created equally. DFP is available to specify, design, and repair any fall protection system or provide fall protection consultative guidance.

Now a nationwide team providing
COAST TO COAST
fall protection solutions



DIVERSIFIED
FALL PROTECTION

ELEVATING SAFETY STANDARDS

(844) 471-2025 • sales@fallprotect.com

Midwest (HQ)

24400 Sperry Drive
Westlake, OH 44145

DFP West

28258 Stanford Avenue
Valencia, CA 91355

DFP Central

224 US-67, Suite 193
St. Louis, MO 63031

DFP Mountain

875 S 600 W
Heber City, UT 84032

DFP East

350 Green Oaks Parkway
Holly Springs, NC 27540