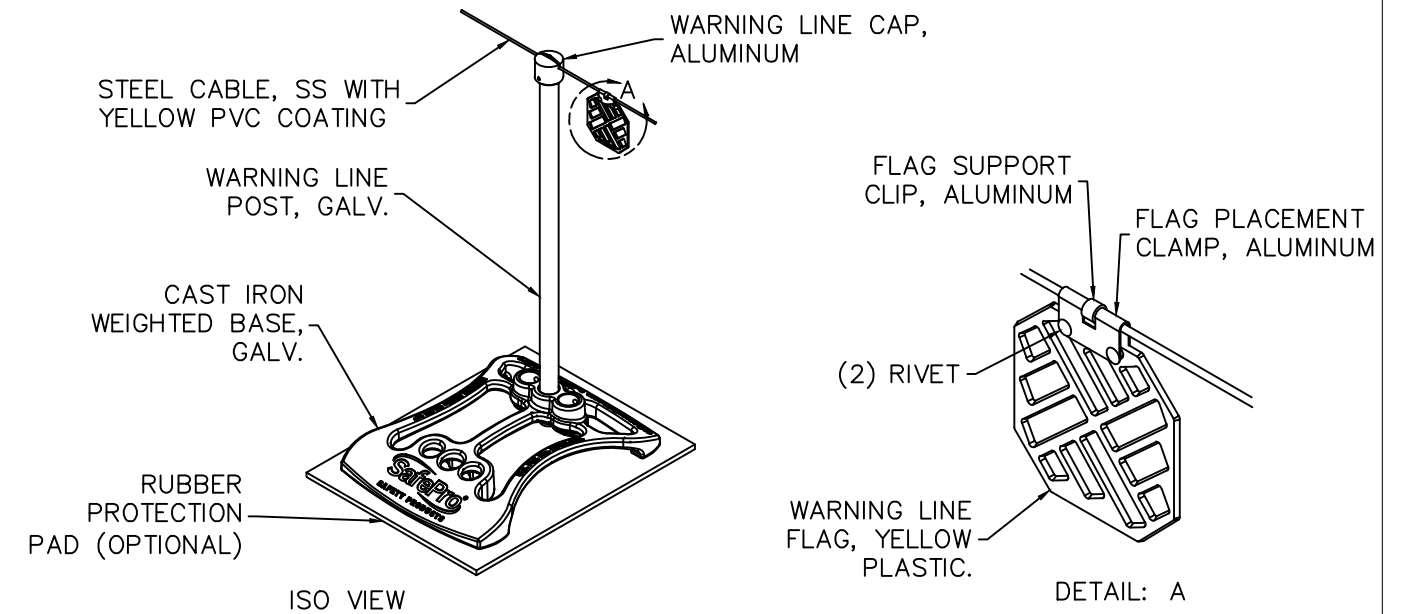
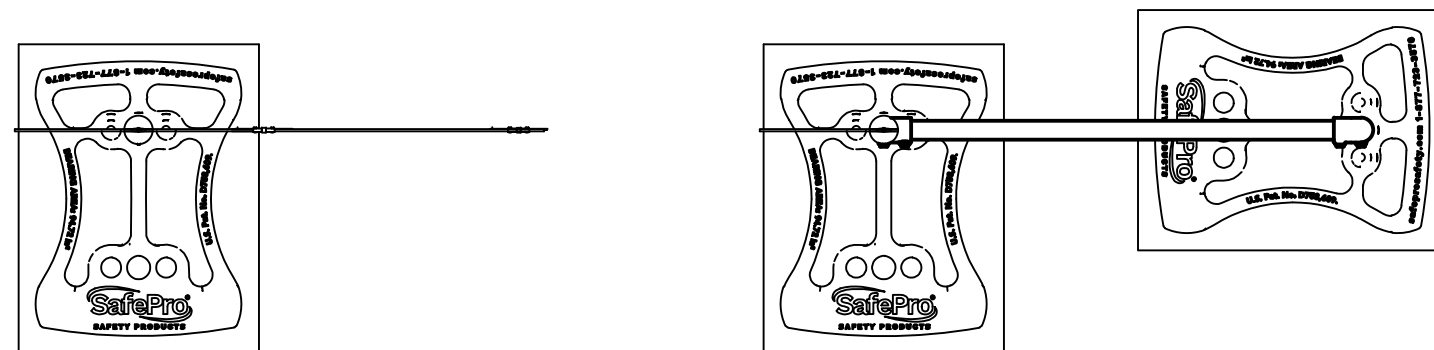
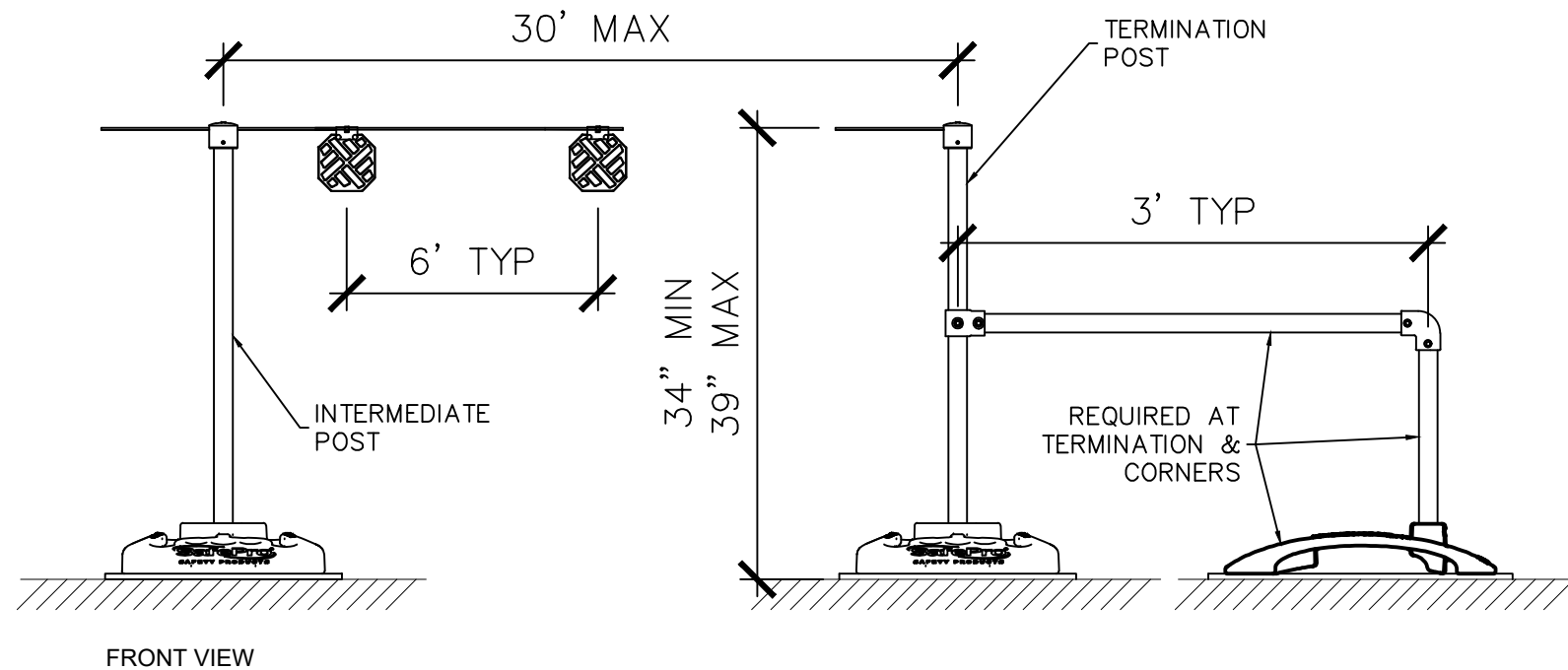


TECHNICAL DATA SHEET BALLASTED WARNING LINE SYSTEM



1. SYSTEM IS DESIGNED TO COMPLY WITH OSHA STANDARDS 29 CFR 1910.28 & 1910.29, 29 CFR 1926.501 & 1926.502, & CAL-OSHA ARTICLE 30, SECTION 1730.
2. SYSTEM MAY BE USED AS A DESIGNATED AREA ON A LOW-SLOPE ROOF, DEFINED BY OSHA STANDARD 29 CFR 1910.28 AS A ROOF THAT HAS SLOPE LESS THAN OR EQUAL TO 4:12 PITCH. HOWEVER, WHEN SYSTEM IS CONSTRUCTED USING INTEGRATED BALLASTED BASES, THE WARNING LINE SYSTEM IS LIMITED TO ROOF SLOPE THAT IS LESS THAN OR EQUAL TO 1:12 PITCH.
3. DESIGNATED AREAS, AS DEFINED BY OSHA 1910.28, MUST BE ERECTED AT LEAST 6FT FROM THE ROOF EDGE AND MAY BE USED ONLY TO CONDUCT WORK THAT IS BOTH INFREQUENT AND TEMPORARY.
4. AS PER OSHA STANDARD 29 CFR 1910.29(d)(3), WHEN MOBILE MECHANICAL EQUIPMENT IS USED TO PERFORM WORK WITHIN A DESIGNATED AREA, THE WARNING LINE MUST BE ERECTED NOT LESS THAN 10FT FROM THE UNPROTECTED SIDE OR EDGE THAT IS PERPENDICULAR TO THE DIRECTION IN WHICH THE MECHANICAL EQUIPMENT IS OPERATED.
5. WHEN THE SYSTEM IS USED TO ASSEMBLE A CONTROLLED ACCESS ZONE TO COMPLY WITH OSHA STANDARD 29 CFR 1926.501(b)(9), THE SYSTEM MUST BE INSTALLED IN ACCORDANCE WITH OSHA STANDARD 1926.502(g). WHEN THE SYSTEM IS USED AS A WARNING LINE TO COMPLY WITH OSHA STANDARD 29 CFR 1926.502(b)(10), THE SYSTEM MUST BE INSTALLED IN ACCORDANCE WITH OSHA STANDARD 1926.502(f). CERTAIN SPECIALTY TRADE WORKERS MAY REQUIRE A GREATER SETBACK FROM THE ROOF EDGE. CONSULT SPECIFIC FEDERAL AND STATE OSHA RULES AND REGULATIONS PRIOR TO INSTALLATION.
6. WHEN THE SYSTEM IS USED TO COMPLY WITH CAL-OSHA ARTICLE 30, SECTION 1730 MUST BE INSTALLED IN ACCORDANCE WITH THOSE PROVISIONS.
7. WHEN USED WITH BALLASTED BASES, THE WARNING LINE SYSTEM IS DESIGNED TO WITHSTAND AN ASCE 7-16 ULTIMATE WIND SPEED OF UP TO 120 MPH ON A RISK CATEGORY II BUILDING WITH EXPOSURE CATEGORY B. THE STANDARD DESIGN CONFIGURATION MAY BE RECONFIGURED BY SAFEPRO TO ACCOMMODATE ALTERNATE SITE CONDITIONS IF REQUIRED.