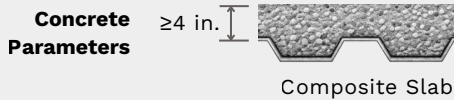
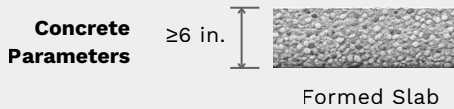


Suitable reinforced slabs must be normal weight concrete (140-150 pcf) and have a minimum compressive strength ( $f'_c$ ) = 3,000 psi

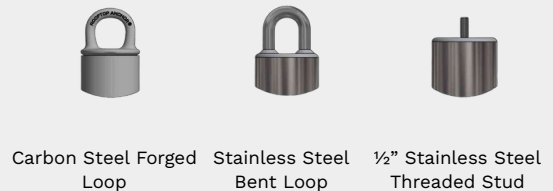


Anchor Height (H) (in.)	Baseplate Overall Dimensions (in.)		OD (in.)
	Overall Dimensions (in.)	OD (in.)	
12	12x12	4	
15	12x12	4	
18	14x14	4	



Anchor Height (in.)	Baseplate Overall Dimensions (in.)		OD (in.)
	Overall Dimensions (in.)	OD (in.)	
12	12x12	4	
15	12x12	4	
18	14x14	4	
21	14x14	4	
24	16x16	4 1/2	

#### Connection Points



**Use & Compliance** Permanent anchorage for personal fall arrest, travel restraint, and façade/window-washing use, designed for a minimum 5,000 lb ultimate load per OSHA 1910/1926, ASME A120.1, and ANSI Z359.6.

**Determining Minimum Anchor Height** Confirm minimum roof flashing height required with architectural or roofing specifications. The overall distance from the top of concrete to the roof membrane plus the minimum flashing height required will equal the minimum roof anchor height. Custom anchor heights are available upon request.

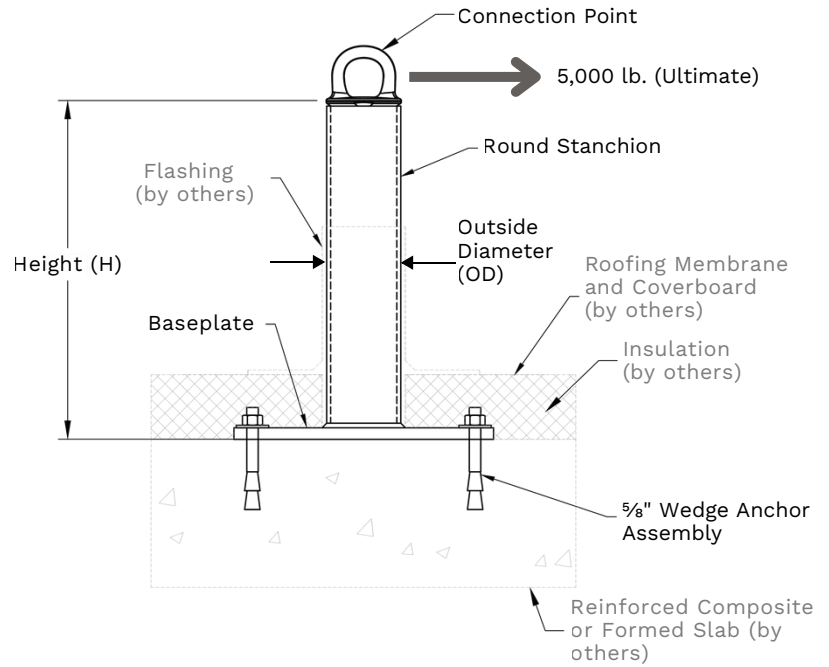
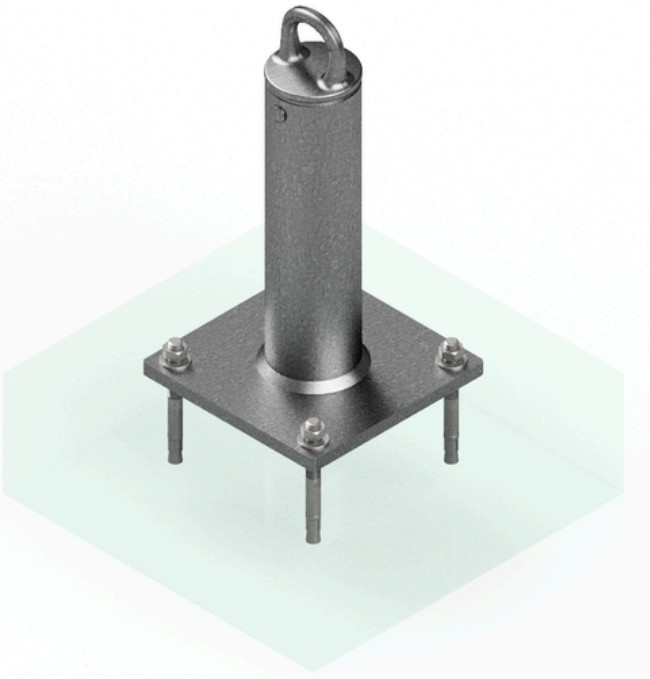
**Material Specifications**

Round HSS	ASTM A500 Grade C	Hot-Dip Galvanized
Plate	ASTM A572 Grade 50	(HDG)
Wedge Anchors	Hilti Kwik Bolt T22	Zinc Plated CS

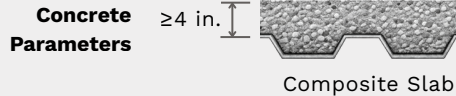
**Custom Design** In addition to our standard portfolio, Diversified Fall Protection can design, qualify and furnish custom anchors to meet specific project and structural requirements; including stainless steel components, custom base plates, anchor heights, and stanchion material.

#### PROPRIETARY AND CONFIDENTIAL

The information contained in this drawing is the sole property of Diversified Fall Protection. Any reproduction in part of or as a whole without written permission of Diversified Fall Protection is prohibited. [estimating@fallprotect.com](mailto:estimating@fallprotect.com) | (855) 552-9779 | [www.fallprotect.com](http://www.fallprotect.com)

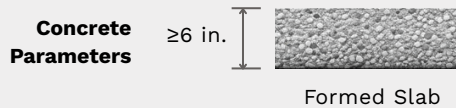


Suitable reinforced slabs must be normal weight concrete (140-150 pcf) and have a minimum compressive strength ( $f'_c$ ) = 5,000 psi



**Baseplate**

Anchor Height (H) (in.)	Overall Dimensions (in.)	OD (in.)
12	10x10	4
15	10x10	4
18	12x12	4
21	12x12	4



**Baseplate**

Anchor Height (in.)	Overall Dimensions (in.)	OD (in.)
12	10x10	4
15	10x10	4
18	12x12	4
21	12x12	4
24	14x14	4 1/2

#### Connection Points



Carbon Steel Forged Loop



Stainless Steel Bent Loop



1/2" Stainless Steel Threaded Stud

#### Use & Compliance

Permanent anchorage for personal fall arrest, travel restraint, and façade/window-washing use, designed for a minimum 5,000 lb ultimate load per OSHA 1910/1926, ASME A120.1, and ANSI Z359.6.

#### Determining Minimum Anchor Height

Confirm minimum roof flashing height required with architectural or roofing specifications. The overall distance from the top of concrete to the roof membrane plus the minimum flashing height required will equal the minimum roof anchor height. Custom anchor heights are available upon request.

#### Material Specifications

Round HSS Plate	ASTM A500 Grade C	Hot-Dip Galvanized (HDG)
Wedge Anchors	ASTM A572 Grade 50	Zinc Plated CS
	Hilti Kwik Bolt TZ2	

#### Custom Design

In addition to our standard portfolio, Diversified Fall Protection can design, qualify and furnish custom anchors to meet specific project and structural requirements; including stainless steel components, custom base plates, anchor heights, and stanchion material.

#### PROPRIETARY AND CONFIDENTIAL

The information contained in this drawing is the sole property of Diversified Fall Protection. Any reproduction in part or as a whole without written permission of Diversified Fall Protection is prohibited.  
 estimating@fallprotect.com | (855) 552-9779 | www.fallprotect.com