

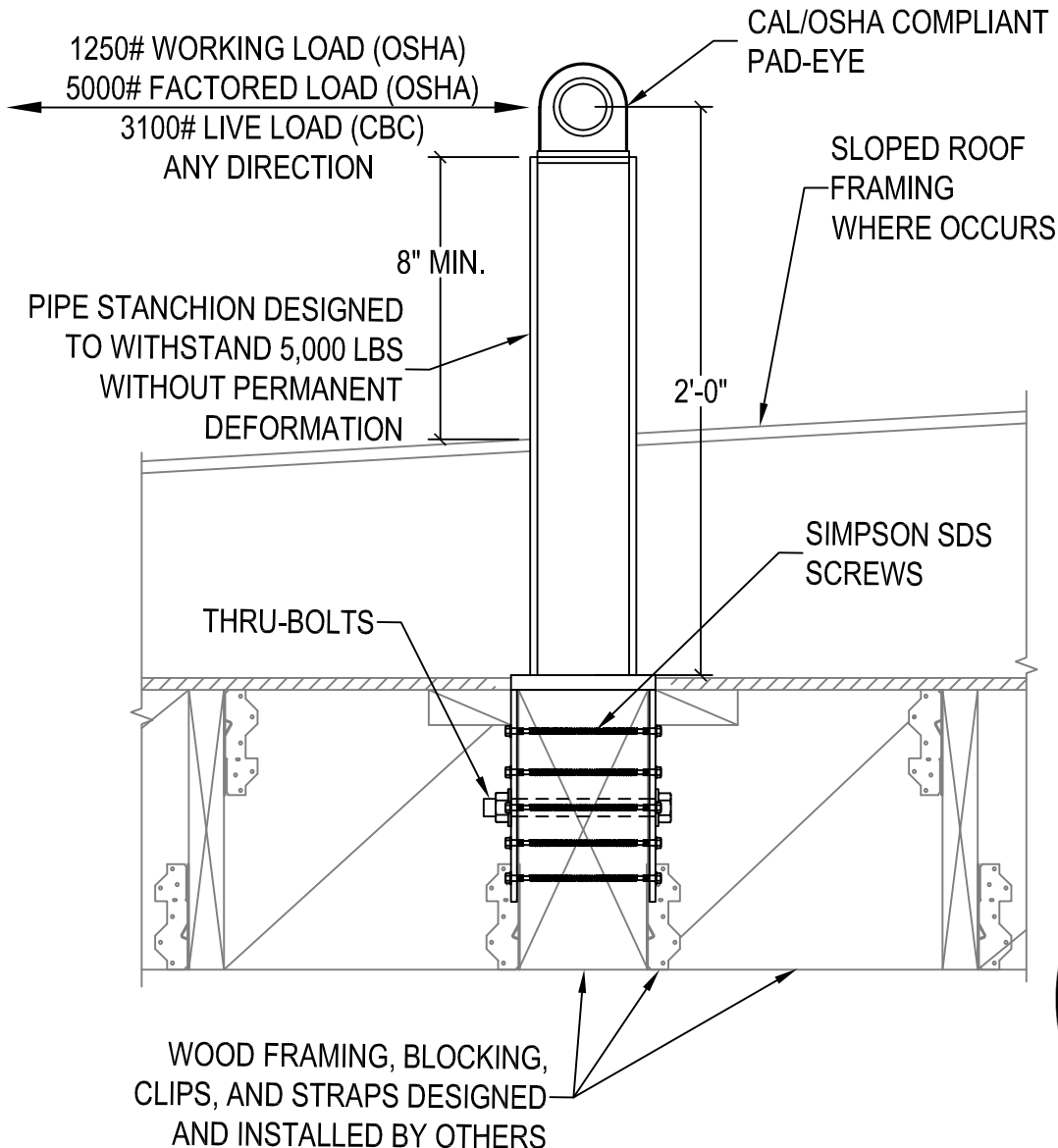


DIVERSIFIED FALL PROTECTION

TECHNICAL DATA SHEET 24" TALL SADDLE STYLE TIE-BACK ANCHOR

INFORMATION:

- THIS ANCHOR HAS BEEN DESIGNED TO MEET OR EXCEED OSHA 1910 AND 1926.
- DESIGNED FOR A 5,000 LB ULTIMATE LOAD IN ANY DIRECTION WITHOUT PERMANENT DEFORMATION
- IT IS RECOMMENDED THAT THE ANCHORAGE BE LOCATED, INSTALLED AND TESTED BY A QUALIFIED INDIVIDUAL AS REQUIRED BY OSHA.
- AVAILABLE WITH HOT DIP GALVANIZED, THERMAGALV OR STAINLESS STEEL
- IDEAL FOR WOOD FRAMED ASSEMBLIES WITH A SINGLE SUPPORT BEAM PROVIDED



ELEVATION VIEW



FAILURE TO COMPLY WITH MANUFACTURER'S INSTALLATION AND USE PROCEDURE MAY RESULT IN PROPERTY DAMAGE, PERSONAL INJURY OR DEATH. ONLY QUALIFIED PERSONS EXPERIENCED IN THESE INSTALLATION METHODS SHALL INSTALL DFP'S EQUIPMENT. IF METHOD OF INSTALLATION IS NOT UNDERSTOOD, DO NOT ATTEMPT TO INSTALL THIS EQUIPMENT. THE OPERATOR OF THIS EQUIPMENT IS RESPONSIBLE TO BE TRAINED IN THE CORRECT USAGE AND MAINTENANCE OF THIS EQUIPMENT BY A COMPETENT PERSON. IF METHOD OF USE IS NOT UNDERSTOOD, DO NOT ATTEMPT TO USE THE EQUIPMENT. ALL EQUIPMENT SHALL BE INSPECTED ANNUALLY AND RE-CERTIFIED AT PERIODS NOT TO EXCEED 10 YEARS BY A QUALIFIED PERSON.

PROPRIETARY AND CONFIDENTIAL

THE INFORMATION CONTAINED IN THIS DRAWING IS THE SOLE PROPERTY OF DIVERSIFIED FALL PROTECTION (DFP). ANY REPRODUCTION IN PART OR AS A WHOLE WITHOUT WRITTEN PERMISSION OF DFP IS PROHIBITED.