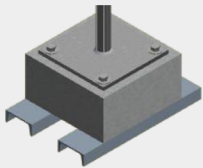
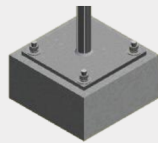


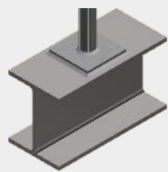
Structural Attachments



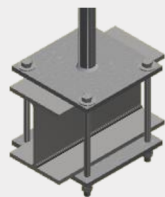
Bolt-Through Concrete



Post-Installed Concrete



Weldable
(optional baseplate)



Beam Wrap

Baseplate Sizes

Overall Dimensions (in.)	4x8	8x8	10x10
Max Beam Width (in.)	N/A	6 ½	8 ½
Min Concrete Thk. (in.)	5	3 ½	3 ½

Use & Compliance

- Designed to comply with OSHA 29 CFR 1910.23.
- Railings and posts are made of galvanized steel pipe. Post spacing shall be a maximum of 10'-0".
- Railings and posts shall be connected with galvanized steel set screw fittings as indicated. All fitting set screws must be tightened to 29 ft-lbs.
- Guardrails are designed to withstand 200 lbs concentrated load in any direction at any point along the top rail.
- Top edge height of top rail shall be located between 39" and 45" above the walking/working surface.

Structural Reinforcement

Local effects from guardrail applied loads shall be evaluated by the project structural EOR. If required, the design, supply and installation of stiffeners and bracing is by others.

Material Specifications

Round HSS (pipe)	ASTM A500 Grade B	
Plate	ASTM A572 Grade 50	
Threaded Rod	ASTM A193 Grade B7	Hot-Dip Galvanized (HDG)
Hex Nut	ASTM A563 Grade DH	
Washers	ASTM F436 Type 1	

Custom Design

In addition to our standard portfolio, Diversified Fall Protection can design, qualify and furnish custom guardrail to meet specific project and structural requirements; including stainless steel components, custom structural attachments, and post heights.

PROPRIETARY AND CONFIDENTIAL

The information contained in this drawing is the sole property of Diversified Fall Protection. Any reproduction in part of or as a whole without written permission of Diversified Fall Protection is prohibited.
 estimating@fallprotect.com | (855) 552-9779 | www.fallprotect.com