

ROOFSAFE™ RAIL SYSTEM



# ROOFSAFE™ RAIL SYSTEM



THE ULTIMATE IN FALL PROTECTION

PRODUCT SHEET

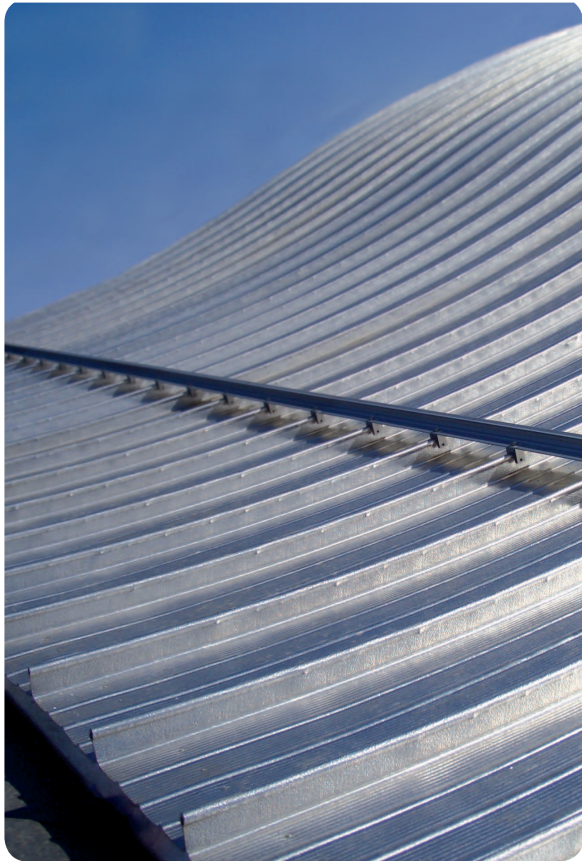




# WORKING SAFELY AT HEIGHTS

Current workplace legislation requires that any person working at height should be properly protected against the risk of falling. This is especially important for people required to work on roofs for maintenance, inspection and construction tasks, as they can be exposed to significant risks. Changes in weather, fragile roof elements, slips and trips, wind and steep inclines can all add to the dangers, so providing a safe system of work for anyone required to access a roof is essential and ensures compliance with regulations and the safety of employees and contractors.

Roofs are also used to provide access for other regular building maintenance and inspection tasks, such as rope access work or access to cradles and suspended gantries, where the need for a secure and sometimes comprehensive anchorage system is essential. With all of these considerations in mind, Capital Safety developed RoofSafe™, an extruded aluminum rail system which combines a simple, functional anchorage system with very high levels of user safety and great aesthetics. It is the perfect complement to any building and mitigates many of the risks associated with roof work.



# SAFETY SHOULD NOT COMPROMISE AESTHETICS

The RoofSafe™ Rail System offers the very latest in fall protection technological development. The extruded aluminum rail system can be fitted to built up and composite metal pitched roof systems and a variety of standing seam roof systems, providing an extremely aesthetically pleasing and practical safety system. RoofSafe™ can be used to facilitate roof inspections, routine maintenance, gutter cleaning, façade access, access to roof plant and any number of other roof top work procedures.



COMPOSITE ROOF

## RoofSafe™ for built up and composite roof systems

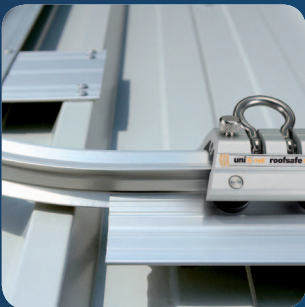
The system is fixed to the outer skin of the roof system using aluminum bulb type rivets.

The use of this type of rivet in the correct sequence ensures safety, without compromising the integrity of the roof.

The small penetrations are further sealed using approved roofing products. Fixing holes are drilled on site to suit the roof profile, ensuring installation is quick, easy and cost effective.



COMPREHENSIVE  
PROTECTION



TOP QUALITY



GREAT AESTHETICS



# GREAT AESTHETICS UNCOMPROMISING SAFETY

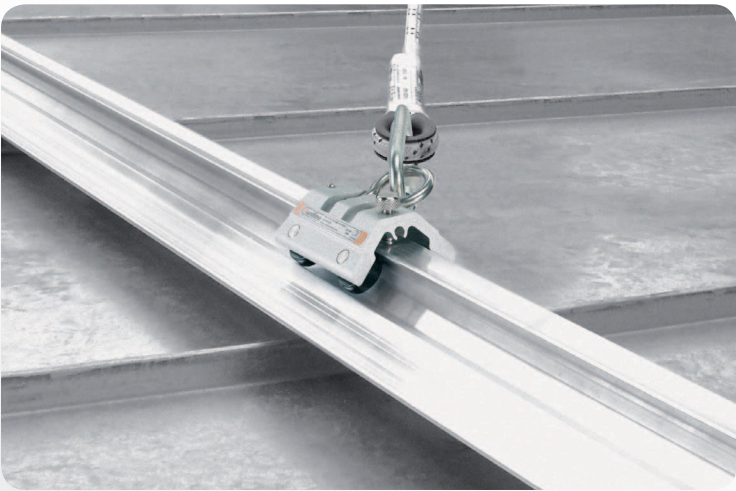
## FEATURES AND BENEFITS OF THE ROOFSAFE™ RAIL SYSTEM

- RoofSafe™ is the only direct to roof rail system that can facilitate changes in direction and roof slopes, ensuring continuous safe roof access where it is needed
- RoofSafe™'s low profile and discrete design provides an unobtrusive safety anchorage solution, ensuring a buildings appearance need not be spoilt by anchor points and cables
- RoofSafe™ provides a safety anchorage system for multiple users, allowing more complex maintenance tasks to be undertaken in an efficient manner, including suspended rope access work
- Even load distribution through the fixing system ensures complete safety in the event of a single user fall without damaging the integrity of the roof system
- The solid nature of the anchorage ensures no deflection or unnecessary loading of anchor points during use and makes the product especially beneficial on roofs with a pitch of more than 15 degrees. This gives the user a high level of confidence
- A four wheel attachment carriage runs effortlessly along the extruded aluminum rail, making the system extremely user friendly. An important factor when promoting the use of a roof safety anchorage
- The light weight modular rail system comes in 3m (9.84ft) sections, making it easy to transport and handle on site
- The RoofSafe™ System eliminates many common hazards associated with cable based fall protection systems including cable fretting, cable tension, cable deflections, accidental roof anchor deployment, passing of intermediate cable supports, roof sheet abrasion and roof traversing.

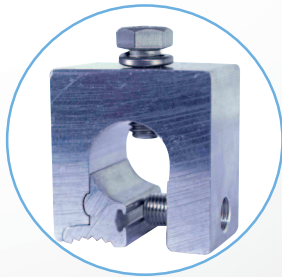


## ROOFSAFE™ FOR STANDING SEAM ROOF SYSTEMS

A range of non-penetrative clamps enables the system to be fitted to a variety of standing seam roof systems. The low profile, aesthetic benefits of the product lends itself especially well to this type of roofing system, which is often used on high profile and distinctive buildings.



STANDING SEAM INSTALLATION

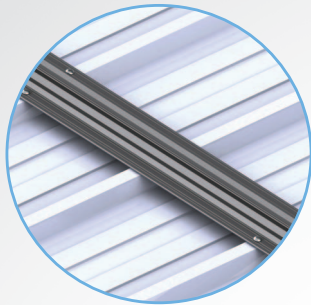


STANDING SEAM CLAMPS



RANGE OF CLAMPS

## KEY COMPONENTS OF THE ROOFSAFE™ SYSTEM



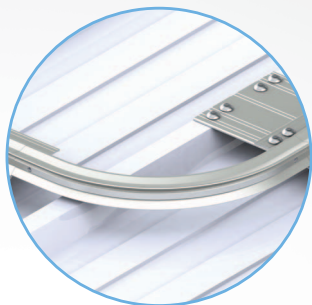
### RAIL PROFILE

The one piece base plate's unique profile facilitates ease of installation and directs water away from fixing points. Each length is joined with a spigot pin to provide additional strength and to help with alignment. Standard lengths are 3m (10ft).



### SPREADER PLATES

The spreader plates incorporate the same fixing features as the base plate and facilitate attachment of the system 'upslope' to a variety of wider roof profiles.



### CORNERS

The RoofSafe™ System is available with 90 and 45 degree corners as standard and ridge and valley rail joints can be formed to allow continuous attachment.

## PRODUCT INTEGRATION

Successful safety system design requires early input from trained safety professionals. Capital Safety's team is on hand to provide you with design input, identifying system layouts, fixing detail, structural suitability and discussing how the system will be utilized. This is an important feature of Capital Safety's product offering and it ensures that system designs are both safe and practical, providing complete functionality for future users.

For architects, Capital Safety can provide technical drawings and specification details to help with the inclusion of its products in building specification documents and tenders.  
e-mail: [design@capitalsafety.com](mailto:design@capitalsafety.com)

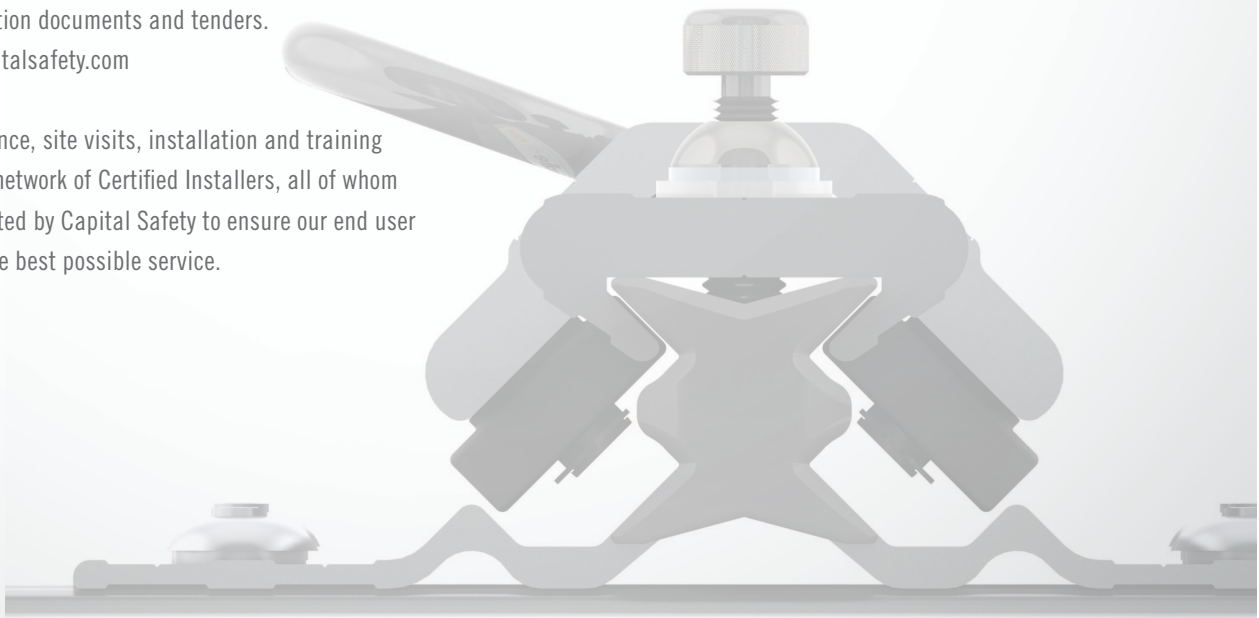
Local design assistance, site visits, installation and training is facilitated by our network of Certified Installers, all of whom are trained and audited by Capital Safety to ensure our end user customers receive the best possible service.



DESIGN GUIDANCE AND SUPPORT

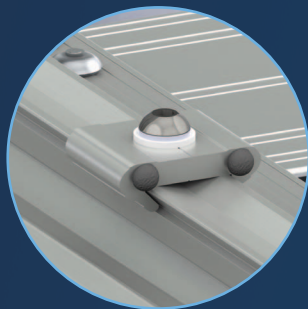


SYSTEM INTEGRATION





# SELF RETRACTING LIFELINES



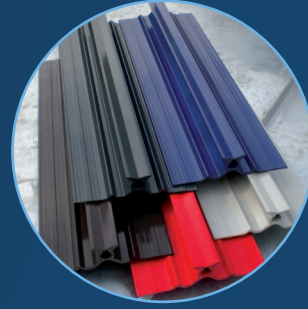
## END STOPS

Stops incorporated at each end of the system provide a buffer for the attachment carriages and keep users a safe distance from the roof edge during use.



## ATTACHMENT CARRIAGE

The 4 wheel carriage, can be left permanently on the rail or removed for storage. A parking facility makes it ideal for work positioning activities on steeper roofs. The carriage's design allows it to glide easily along the system no matter what the angle of take off.



## A CHOICE OF FINISHES

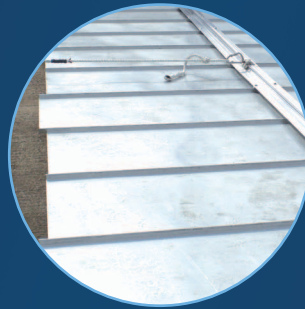
All components are made from 6000 series aluminum alloy and can be anodized or powder coated to provide additional resistance to environmental conditions or enhance the products aesthetic appeal. All stainless steel parts are manufactured from grade 316 or higher for good corrosion resistance.

## Testing and Approvals

When selecting a safety system for your building or structure, you need to feel certain you are providing a well engineered and totally safe solution to future access requirements, giving you peace of mind. Capital Safety goes to great lengths in the design and development process to ensure that the products you buy are robust, functional and offer good value for money. Capital Safety operates comprehensive product testing programs in conjunction with major roof manufacturers to ensure RoofSafe™ offers the highest standards of safety, without compromising the roof systems performance. RoofSafe™ conforms with International Fall Protection Standards including EN795, OSHA and AS/NZS. Capital Safety operates an ISO9001 Quality System for your peace of mind.



TESTING AND APPROVALS



DYNAMIC PERFORMANCE TEST



MULTIPLE SOLUTIONS

## A Complete Solution

As well as RoofSafe™, Capital Safety also offers steel wire and synthetic cable fall protection systems, roof anchors, other horizontal rail systems, rescue products and vertical climbing systems for permanent applications.

All of Capital Safety's systems provide hands free continuous protection and offer a wide range of fixing solutions for modern buildings and structures.

# EVACUATION & RESCUE AT HEIGHT



**Many people engaged in Roofwork are actively using harnesses, lanyards and anchor points as part of their every day work activities. If they fall from or through a roof while attached to an anchor point it is unlikely they will be able to recover themselves. In this case, someone will need to recover the fallen worker in a safe and timely manner to prevent further trauma and in extreme cases, death. Capital Safety makes rescue planning straightforward with their comprehensive product and service offer.**

Using Capital Safety's extensive experience we have put together a number of standard kits to ensure that you are equipped for every eventuality within your industry or sector.

In the event that a person working at height falls while attached to a fall protection system, it is very unlikely that they will be able to recover themselves.

If this is the case, then specialized equipment used by trained personnel will be required to quickly and efficiently affect a rescue or recovery.

Failure to recover a worker suspended in a safety harness following a fall within a period of 20 minutes could lead to suspension trauma, which in some cases can be fatal.

In order to achieve such a rescue or recovery in time, it is essential that work is correctly planned, risks considered and intuitive equipment is available for use by competent people.

Capital Safety supplies a range of brilliantly engineered and highly intuitive rescue and evacuation products, that when combined as part of a complete access solution, effectively mitigate workplace risks.

Each device has been developed to offer simplicity of use and increase user confidence so that rescue provisions can be considered and implemented by those that need it across a wide range of industry sectors.

In many cases products offer cross functionality, which additionally reduces the need to carry multiple pieces of rescue equipment and saves money in both product and training.



INDUSTRY ROOFING RESCUE & EVACUATION KIT





## INNOVATION THAT BRINGS WORKERS AT HEIGHT HOME SAFELY.

Capital Safety is a global company solely dedicated to fall protection and rescue. Our focus is razor sharp. And it continually drives us to design and manufacture the safest possible height safety gear.

We understand the industries we serve and listen to the workers in the field. We employ the best engineers to create innovative solutions and patent the products that keep workers safe at heights around the world. Capital Safety has the best quality and largest range of fall protection products in the industry. But we're more than a product company.

We take an innovative approach in bringing our products to the field. We have created international partnerships and a vast network of authorized distributors, certified installers and service centers. We offer on-site and in-house training. And we're ISO 9001-2000 certified for customer service, as well as manufacturing and engineering.

Capital Safety is one of the world's leading manufacturers of fall protection and rescue equipment, with decades of experience and a legacy of innovation. Look for complete solutions in our extensive line of DBI-SALA®, Uniline® and Protecta® products.



**Capital Safety** - USA: 800 328 6146  
Canada: 800 387 7484 | Latin America: +1 651 385 4301  
Asia: +65 65587758 | Germany: +49 7195 977 11 14  
New Zealand: 0800 212 505 | Australia: 1800 245 002  
Europe, Middle East, Africa: +33 (0)4 97 10 00 10  
Northern Europe: +44 (0)1527 548000  
[www.capitalsafety.com](http://www.capitalsafety.com) [info@capitalsafety.com](mailto:info@capitalsafety.com)