

Window Washing Anchors

**Anchor employees
and contractors
while working on
building facades**

**Peak Fall Protection Anchors –
Now available from Diversified Fall Protection**

For years, contractors and facility professionals have trusted Peak Fall Protection as the leading provider of window washing anchorage solutions. Today, Diversified Fall Protection is proud to bring PEAK window washing anchors to clients nationwide.



Elevating safety standards
FallProtect.com

Why PEAK Window Washing Anchors?



Meet and exceed OSHA fall protection standards



Designed by on-staff engineering team



Fabricated by certified welders



May be customized to suit project-specific needs



Galvanized steel construction and stainless-steel connection points



Corrosion resistance and long-term compliance



Certifications and associations

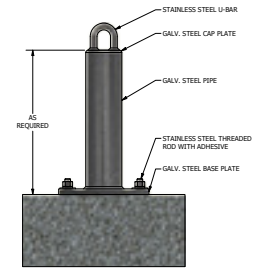
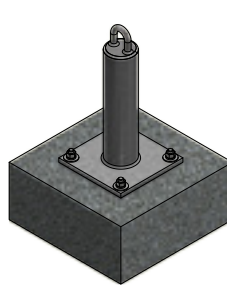


PEAK RA-100

Post-Install Concrete Roof Anchor

Designed with four high-strength fasteners for post-installation to concrete slabs.

- Stainless Steel: Type 304 (FY = 30 KSI)
- Steel Pipe: ASTM A500 (FY = 42 KSI)
- Steel Plate: ASTM GR50 (FY = 50 KSI)
- SS Threaded Rod: Type 304 (FY = 50 KSI)

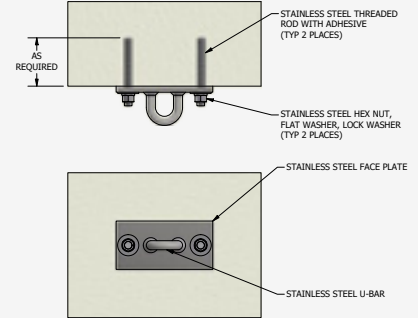
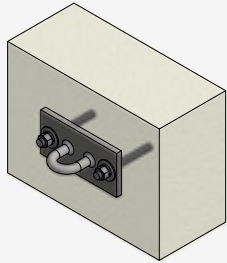


PEAK WA-1001

Post-Install Concrete Wall Anchor

Used for long-lasting attachment to concrete walls, curbs and precast panels.

- Stainless Steel: Type 304 (FY = 30 KSI)
- SS Threaded Rod: Type 304 (FY = 50 KSI)

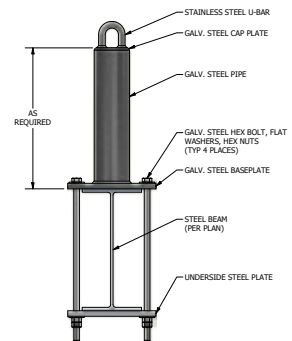
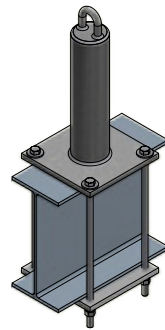


PEAK RA-4700

Beam Wrap Roof Anchor

Attach to steel structures without the need for welding operations in retrofit applications.

- Stainless Steel: Type 304 (FY = 30 KSI)
- Steel Pipe: ASTM A500 (FY = 42 KSI)
- Steel Plate: ASTM GR50 (FY = 50 KSI)
- Galvanized Bolts: ASTM A307A (FU = 60 KSI)

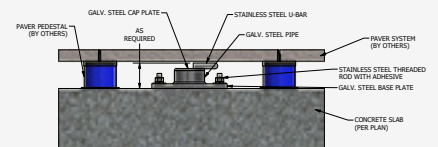


PEAK RA-1000-P

Below Paver Roof Anchor

Allows for compliant connections and seamless integration with architectural finishes.

- Stainless Steel: Type 304 (FY = 30 KSI)
- Steel Pipe: ASTM A500 (FY = 42 KSI)
- Steel Plate: ASTM GR50 (FY = 50 KSI)
- SS Threaded Rod: Type 304 (FY = 50 KSI)

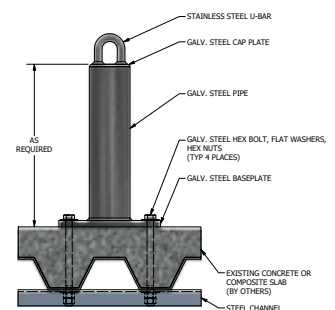
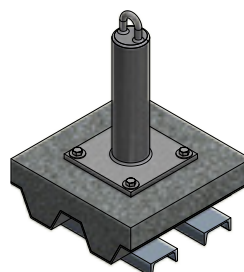


PEAK RA-4000-4

Bolt Through Roof Anchor

Allows for attachment through concrete slabs with underside steel reinforcement members.

- Stainless Steel: Type 304 (FY = 30 KSI)
- Steel Pipe: ASTM A500 (FY = 42 KSI)
- Steel Plate: ASTM GR50 (FY = 50 KSI)
- Steel Channel: ASTM A36 (FY = 36 KSI)
- Galvanized Bolts: ASTM A307A (FU = 60 KSI)

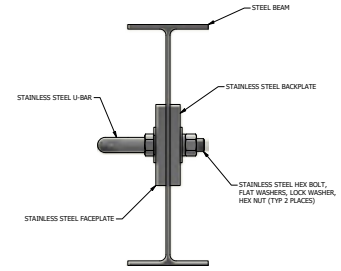
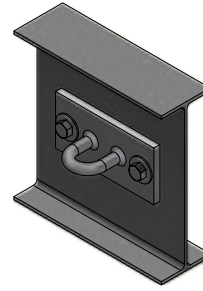


PEAK WA-4000

Bolt Through Steel Wall Anchor

Provides a secure point of designated connection to withstand fall protection anchor loads.

- Stainless Steel: Type 304 (FY = 30 KSI)

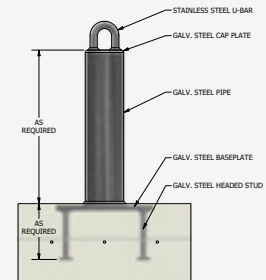
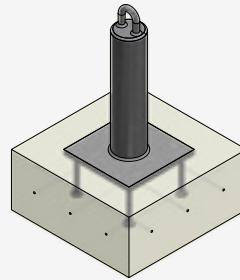


PEAK RA-2400

Cast in Place Roof Anchor

Cast into concrete slabs at the time of concrete placement for a single, streamlined assembly.

- Stainless Steel: Type 304 (FY = 30 KSI)
- SS Threaded Rod: Type 304 (FY = 50 KSI)

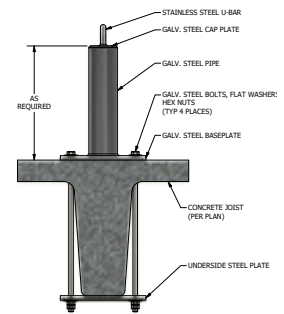
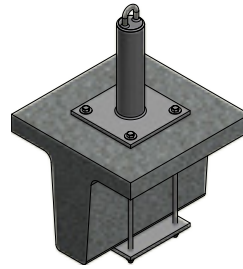


PEAK RA-4700-CJ

Concrete Joist Wrap Anchor

Engage joists, bolts and underside plates for attachment to concrete slabs.

- Stainless Steel: Type 304 (FY = 30 KSI)
- Steel Pipe: ASTM A500 (FY = 42 KSI)
- Steel Plate: ASTM GR50 (FY = 50 KSI)
- Galvanized Bolts: ASTM A307A (FU = 60 KSI)

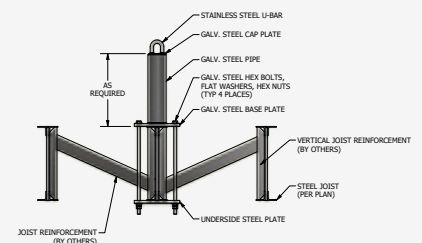
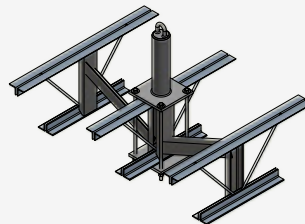


PEAK RA-4500-JW

Joist Wrap Roof Anchor - New Construction

Ideal for open web steel joists requiring supplemental reinforcement.

- Stainless Steel: Type 304 (FY = 30 KSI)
- Steel Pipe: ASTM A500 (FY = 42 KSI)
- Steel Plate: ASTM GR50 (FY = 50 KSI)
- Galvanized Bolts: ASTM A307A (FU = 60 KSI)

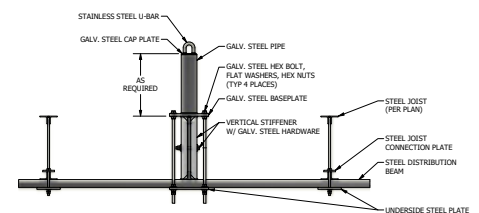
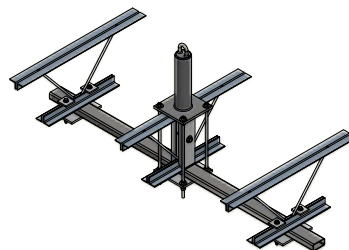


PEAK RA-4500-JWDB2

Joist Wrap Roof Anchor – Retrofit

Existing open web steel joists can be reinforced with bolted attachments.

- Stainless Steel: Type 304 (FY = 30 KSI)
- Steel Pipe: ASTM A500 (FY = 42 KSI)
- Steel Plate: ASTM GR50 (FY = 50 KSI)
- Steel Channel: ASTM A36 (FY = 36 KSI)
- Steel Tube: ASTM A500 (FY = 46 KSI)
- Galvanized Bolts: ASTM A307A (FU = 60 KSI)

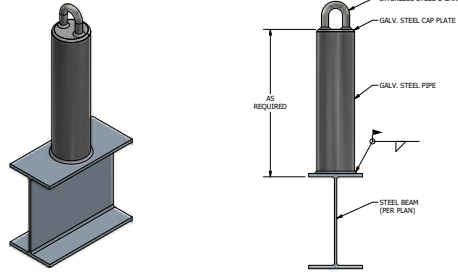


PEAK RA-3400

Weldable Roof Anchor

Anchors configured for field welded attachment to a steel beam top flange.

- Stainless Steel: Type 304 (FY = 30 KSI)
- Steel Pipe: ASTM A500 (FY = 42 KSI)
- Steel Plate: ASTM GR50 (FY = 50 KSI)

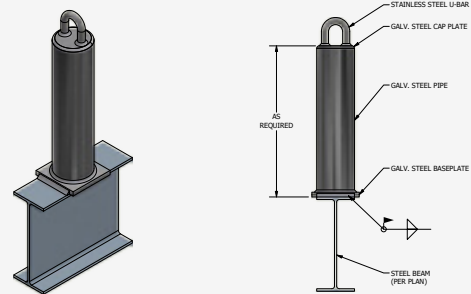


PEAK RA-3100

Weldable Roof Anchor with Base Plate

Designed with integrated base plates to facilitate proper welded connections.

- Stainless Steel: Type 304 (FY = 30 KSI)
- Steel Pipe: ASTM A500 (FY = 42 KSI)
- Steel Plate: ASTM GR50 (FY = 50 KSI)

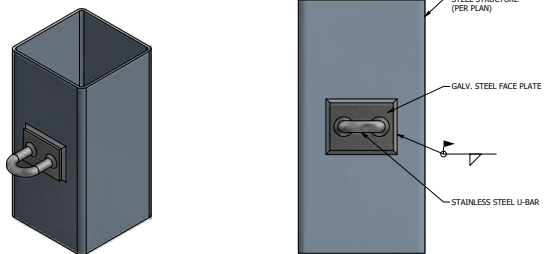


PEAK WA-3000

Weldable Wall Anchor

Compatible with structural steel applications and used for field welded attachments.

- Stainless Steel: Type 304 (FY = 30 KSI)
- Steel Plate: ASTM GR50 (FY = 50 KSI)

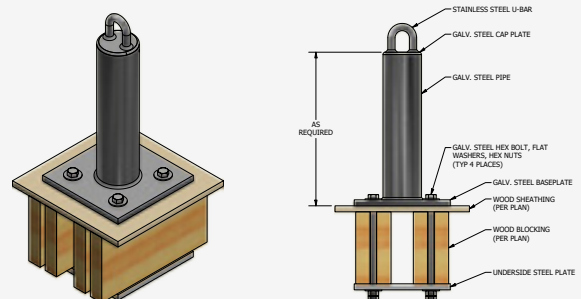


PEAK RA-7400

Wood Structure Mount Roof Anchor

Configured for lasting performance and integration with reinforcement members.

- Stainless Steel: Type 304 (FY = 30 KSI)
- Steel Pipe: ASTM A500 (FY = 42 KSI)
- Steel Plate: ASTM GR50 (FY = 50 KSI)
- Galvanized Bolts: ASTM A307A (FU = 60 KSI)



The Diversified Difference

The safety specialists at Diversified Fall Protection will work with you to learn the unique nature of your facility's access needs and potential fall hazards. Then, we will recommend a selection of Peak Fall Protection roof anchors to meet your needs and to ensure OSHA compliance.

But our support doesn't end there.

We are committed to educating our customers about all things fall protection, so we provide reliable resources and turnkey service, from design and fabrication to installation, training and system recertification. Partner with DFP to protect your company's assets and keep your employees safe.



Represented by:



Elevating safety standards

FallProtect.com

350 Green Oaks Pkwy
Holly Springs, NC 27540
(866) 907-1367

Designed and manufactured in the USA 